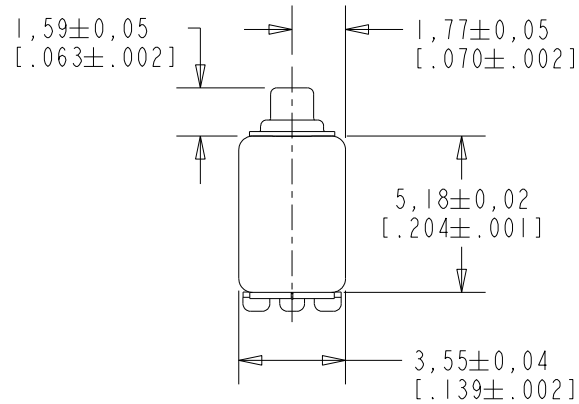


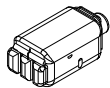
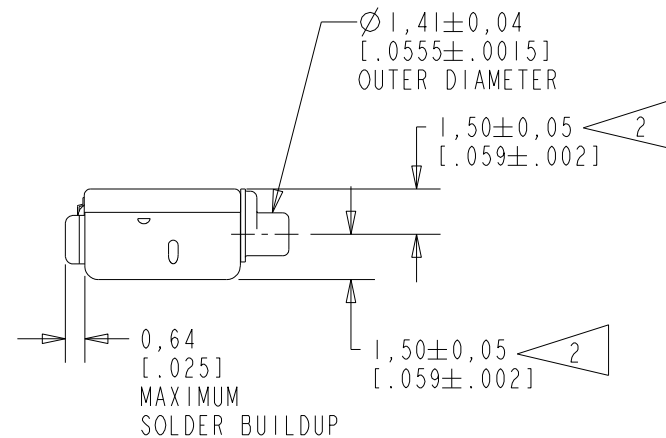
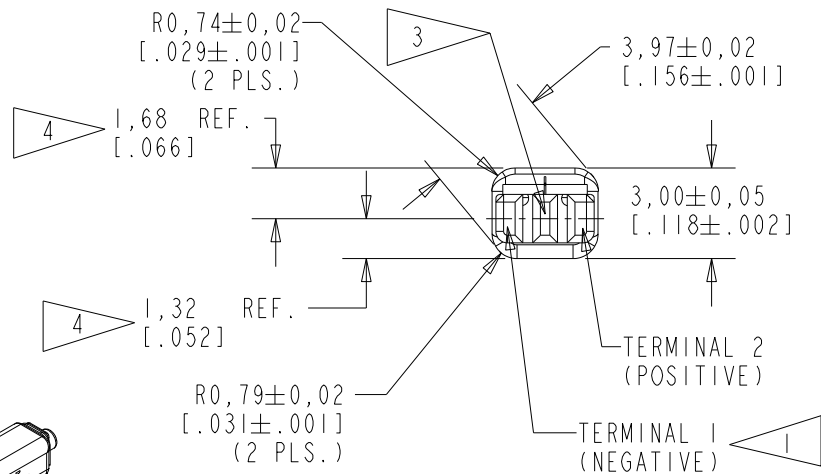
FC-31619-000

SHT 1.1



NOTES:

- 1 A POSITIVE GOING VOLTAGE AT TERMINAL 2, RELATIVE TO TERMINAL 1, CAUSES A DECREASE IN PRESSURE AT THE SOUND OUTLET.
- 2 LOCATED FROM TWO SURFACES FOR CUSTOMER CONVENIENCE. ONLY APPLICABLE FROM ONE SURFACE, NOT TO BE USED TOGETHER.
- 3 TERMINAL ELECTRICALLY CONNECTED TO CASE.
- 4 DIMENSION TO APPROXIMATE CENTER OF TERMINAL PAD.



SCALE 2:1

NOMINAL WEIGHT
.23 GRAMS

DIMENSIONS IN MILLIMETERS [INCHES]

Revision	C.O. #	Implementation Date	RELEASE LEVEL	REVISION
B	PI0001125	1-12-17	Active	B
A	CI0113095	3-22-12		

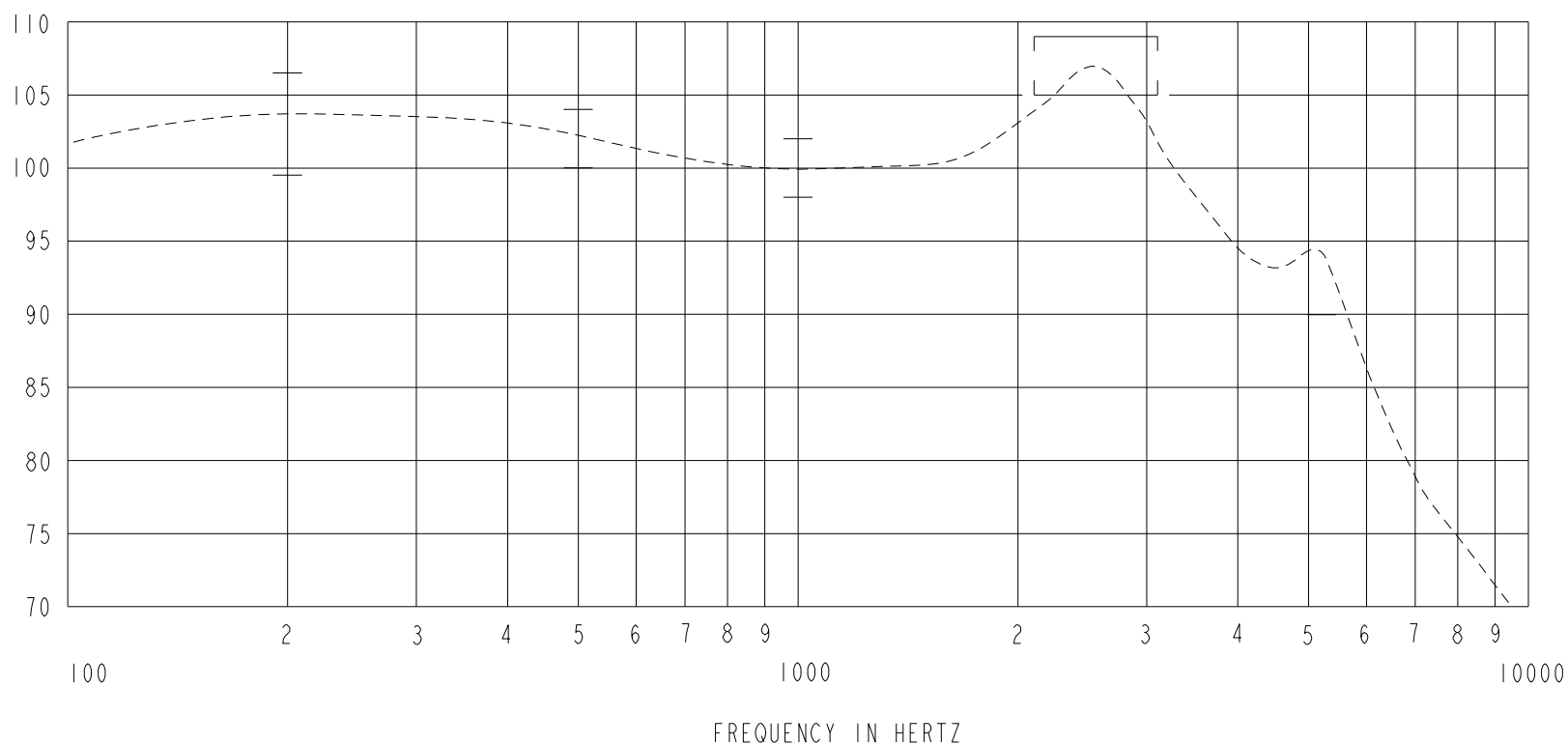
SCALE: 4:1		DR. BY	DATE
DO NOT SCALE DRAWING		LSY	3-22-12
TITLE: RECEIVER		CK. BY	DATE
OUTLINE DRAWING		GJP	3-28-12
FC-31619-000		APP. BY	DATE
SHT 1.1		GJP	3-28-12

KNOWLES CORPORATION

THE FC-31619-000 IS A THREE TERMINAL FC-26465-000 RECEIVER, WITH CENTER TERMINAL CONNECTED TO CASE ONLY

SENSITIVITY IN dB RELATIVE TO 20μPa FOR CONDITIONS SHOWN BELOW

CONSTANT VOLTAGE DRIVE CONDITIONS



ACOUSTICAL

SENSITIVITY
 DEVICE WILL PRODUCE THE SPL LISTED BELOW UNDER TEST CONDITIONS DESCRIBED IN TABLE 3.
 NOMINAL SENSITIVITY AT 1kHz IS dB RELATIVE TO 20μPa. ALL OTHER VALUES
 IN dB RELATIVE TO THE SENSITIVITY AT 1kHz.

FREQUENCY (Hz)	MINIMUM	NOMINAL	MAXIMUM
200	-0.5	+3.5	+6.5
500	0.0	+2.0	+4.0
1000	-2.0	100.0	+2.0
2100 - 3100	+5.0	+7.0	+9.0
5200	-10.0	---	---

PORT LOCATION: 12S
 SOLDER TYPE: SAC305

TABLE 1

TOTAL HARMONIC DISTORTION
 DEVICE WILL NOT EXCEED TOTAL HARMONIC DISTORTION LEVELS LISTED BELOW.

FREQUENCY (Hz)	AC DRIVE (V rms)	DC BIAS (V)	LIMIT (%)
500	0.257	0	10
870	0.129	0	5
1300	0.129	0	5

TABLE 2

TEST CONDITIONS

NOMINAL SOURCE VOLTAGE	0.129 V rms, 0 mA DC BIAS
SOURCE IMPEDANCE	<1 Ohm
TUBING	10mm [.394"] LONG, 1mm [.039"] I.D.
COUPLER CAVITY	2 CM ³ , SIMULATED ANSI S3.7 TYPE HA-3 (IEC 60318-5)

TABLE 3

ELECTRICAL

DC RESISTANCE	40.0 Ohms ± 10%
IMPEDANCE @ 500 Hz	61.3 Ohms ± 15%
IMPEDANCE @ 1kHz	95.3 Ohms ± 15%

TABLE 4

ISOLATION: CASE WILL BE ELECTRICALLY ISOLATED FROM THE COIL CIRCUIT.

TEMPERATURE: OPERATING: SENSITIVITY WILL NOT VARY MORE THAN
 +1/-3 dB FROM -17°C TO 63°C

STORAGE: -40°C TO 63°C

Revision	C.O. #	Implementation Date	RELEASE LEVEL	REVISION
B	PI0001125	1-12-17	Active	B
A	CI0113095	3-22-12		

KNOWLES CORPORATION

WHEN TEST LIMITS ARE USED TO ESTABLISH INCOMING INSPECTION ACCEPTANCE/REJECTION CRITERIA, CORRELATION OF TEST EQUIPMENT WITH KNOWLES IS ALSO REQUIRED FOR ELIMINATION OF EQUIPMENT AND TEST METHOD VARIATION

TITLE: RECEIVER
 PERFORMANCE SPECIFICATION

FC-31619-000
 SHT 2.1

DR. BY	DATE
LSY	3-22-12
CK. BY	DATE
GJP	3-28-12
APP. BY	DATE
GJP	3-28-12